

An aerial photograph of a calm lake surrounded by a dense forest. The trees are in various shades of green and yellow, suggesting an autumn setting. The lake's surface is dark and reflects the surrounding forest. The text "Forest reform in Lithuania: challenges and experience" is overlaid in white, bold font in the center of the image.

# Forest reform in Lithuania: challenges and experience





# GOVERNANCE REFORM OF LITHUANIAN STATE FORESTS

# The reform of Lithuanian state forestry sector: changes of activities



42 State forest enterprises  
and Institute of Forestry



State forest enterprise



2018

2023

3 486	number of employees	2 552	number of employees
4 M Eur	avg. annual operating income	300+ M Eur	annual operating income
26 000 ha	avg. area of controlled forest	1 089 000 ha	area of controlled forest
42	regional branches	26	regional branches



# Map of the regional divisions



# The aim of the reform – substantially improve the quality of state forest management

- 1 Centralized management of forest resources
- 2 Organization based on trust and respect
- 3 More effective processes and economies of scale
- 4 Openness to progress, faster response to changing environment
- 5 Increasing economic return for the state



## New visual identity

In 2019, we changed its brand (logo, colors, fonts, etc.), updated internal and external visual design of communication and car marking.





# MAIN ACTIVITIES AND RESULTS

# Main statistics



**1/3**

of the Lithuanian land consist of forests (33,8 %)



More than **50%**  
of Lithuanian forests are  
State-owned



**40 million**

trees are planted each year,  
while only 7 million are cut



## Main statistics



We maintain 1,1 million ha of forests according to the Trust law



We give back 80 million euros to the State each year



We plant roughly 40 million trees and 500 hectares of new forests each year



We maintain a network of 38 200 kilometers of roads



We prepare 3,6 million ktm of wood for our clients



We restore roughly 8,500 hectares of forests

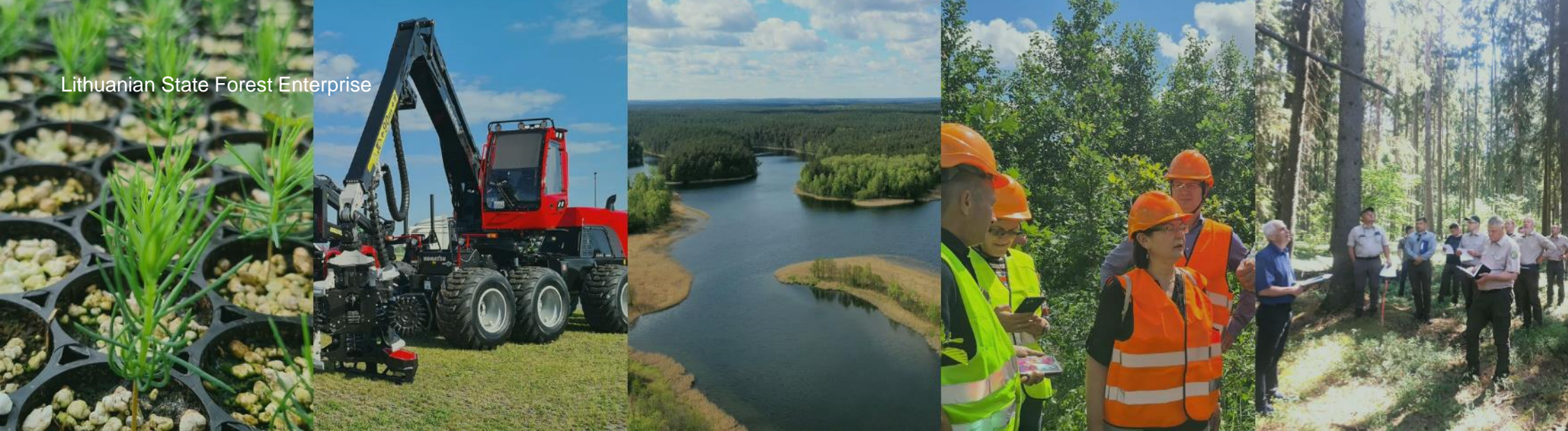


During the fire season, firefighters and our company's employees go to forest fire sites 500-800 times



We supply the biofuel market with raw materials for biofuel production





# The main directions of our activities

## 1. Sustainability of forest ecosystems

- To reduce the impact of climate change and increase stand productivity and resilience.
- To improve the condition of biological diversity in the forests managed by us.

## 2. Services of high quality and accessibility

- To increase the availability and quality of our services provided to the public.
- To improve the quality of logging and trade processes.
- To increase the supply of biofuel stocks and biofuels.

## 3. Transparent activities

- To increase public confidence in us and what we do.
- To promote intolerance for corruption, unethical activities or misappropriation of property.

## 4. Effective activities

- To unify and improve business process management.
- To increase the efficiency of state property management.

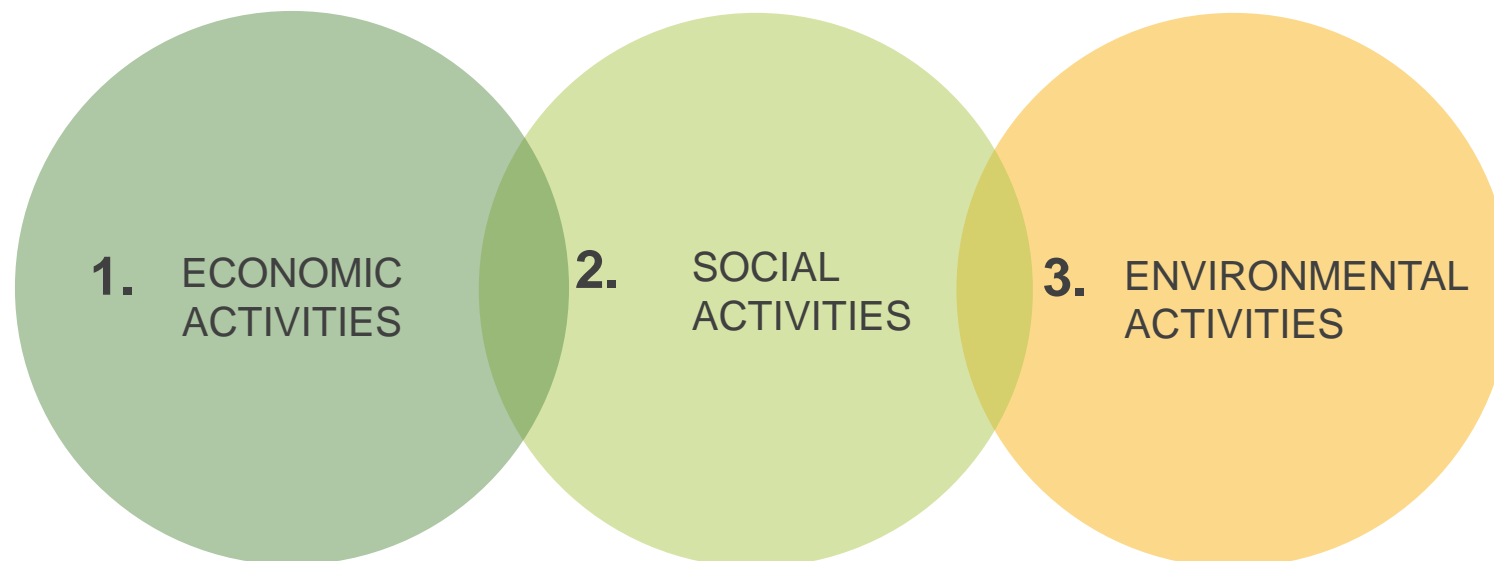
## 5. High-performing work culture and organization

- To implement the principles of social responsibility.
- To implement high-quality, efficient human resource management.





# The functions of State Forest Enterprise cover 3 main fields of activities





# ECONOMIC ACTIVITIES





## Economic activities

### 1. Logging and trading for wood raw materials

- **3,6 million m<sup>3</sup>** raw wood sold
- **300 million Euros sales** income in 2022

### 2. Forest planting, restoration and supervision

- **8 500 ha** area of forests restored yearly
- **500 ha** new forests areas planted yearly

### 3. Nurseries

- **15** State nurseries and Raudondvaris ornamental plant nursery
- **50 million** seedlings grown yearly

### 4. Forest management

- **3** internal forest management projects prepared yearly
- **10 years** of experience with internal forest management projects

### 5. Areas for professional hunting

- **18** hunting areas





# NURSERIES





## Investments in Panevėžys nursery

Five greenhouses with a total area of 12,250 square meters;

Seven seedling growing sites are installed, with a total area of 22,875 square meters;

Equipped with a "day-night" seedling growing site, allowing to adjust the light mode with an area of 3125 square meters;

Seed preparation line installed (seed cleaning with water, vacuum, calibration, irrigation cabinet);

Automatic seed sowing line.



Oak thermotherapy line processing up to 50 tons of depth per season

## Common oak deep thermotherapy





## Semi-automatic sorting of seedlings

Semi-automatic container seedling sorting line for  
conifers;

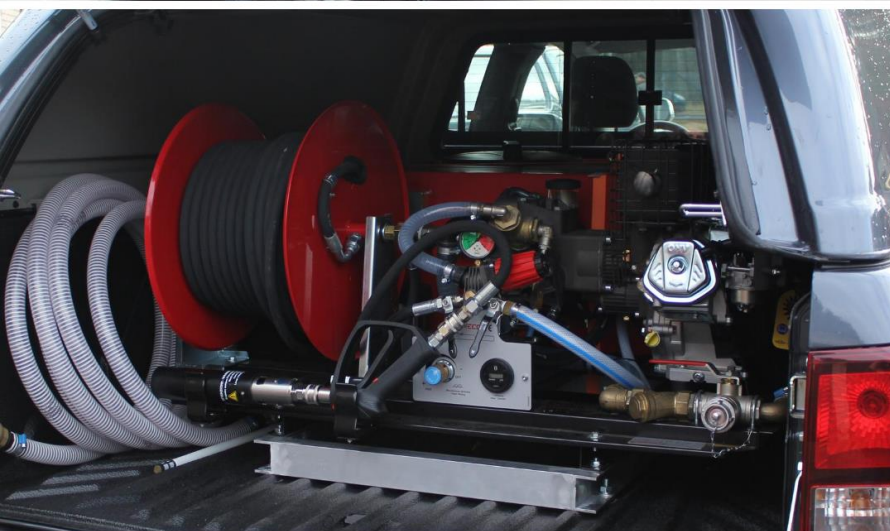
Three refrigerators with a total volume of 11,600 cubic  
meters (9,500; 1,200; 900) were built.





# ENVIRONMENTAL ACTIVITIES



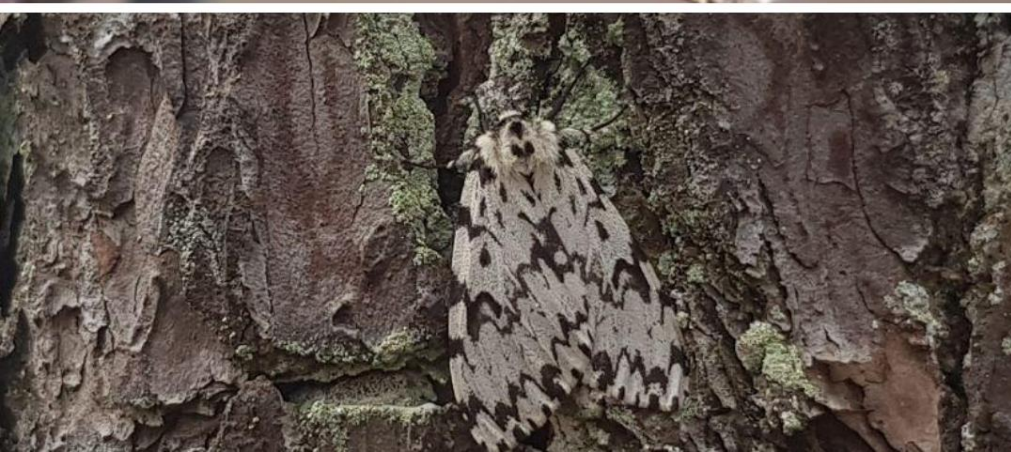


# Environmental activities

## Fire protection equipment

- **41** new SUVs with water modules for primary extinguishing.
- **50** firetrucks
- **15** tractors with water tanks
- **12** drones for forest fire search and sanitary forest protection





## Sanitary activities

The main threats in 2022:

### **Ips typographus:**

- damaged 2900 ha
- executed 2200 ha

### **Ips acuminatus:**

- damaged 10 ha
- executed 10 ha

### **Diprion pini:**

- damaged 1064 ha
- executed NY





# SOCIAL ACTIVITIES





## Social activities

### 1. Environmental protection

- **300 000 ha** out of 1 million ha of state forests are protected areas
- **1 900 ha** forests, meadows and marshes cleaned up yearly

### 2. Objects of recreation for public use

- **1165** recreational objects set up

### 3. Supervision of forest infrastructure

**38 200 km** forest roads under our supervision





# A new beginning for the educational initiative “The young forest friends”

An initiative which seeks to educate children about the forest and the people who work there will be brought to life again starting this autumn.

There will be many joint events, excursions to the forest, lessons and contests.

We wish to engage the younger generation into taking care of the forest and instill the love of nature in them.

**We are incredibly proud of a new generation of forest admirers!**





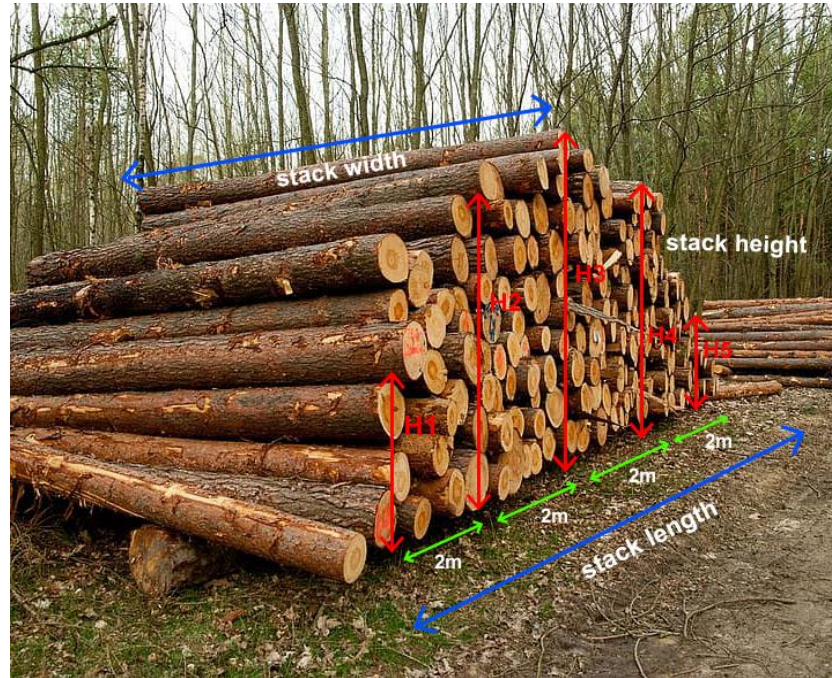
# MEASUREMENT OF ROUND WOOD



## Raw timber is accepted at the seller's warehouse



Unit measurement method



Group measurement method



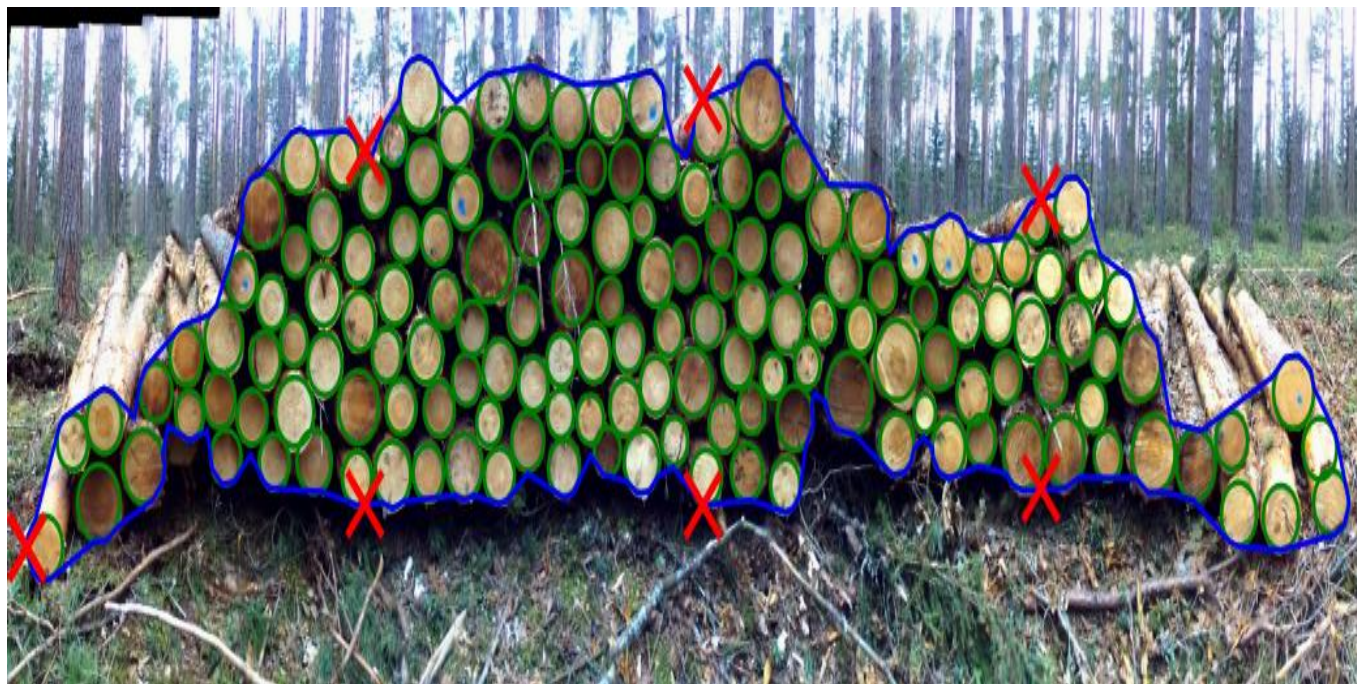


## Acceptance of a raw timber by photogrammetric measurement method in the seller's warehouse

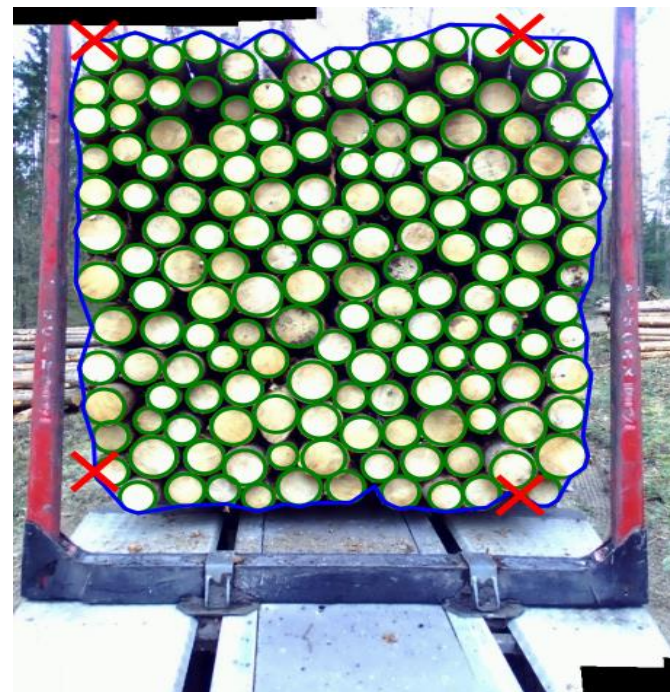




## Acceptance of a raw timber by photogrammetric measurement method in the seller's warehouse



In stacks



In timber trucks





**QUESTIONS?**





**THANK YOU!**



**Valstybinių  
miškų  
urėdija**